

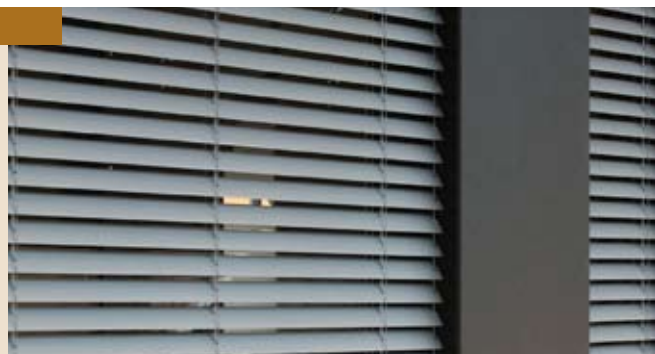
Product Information Exterior Venetian Blinds

Models: AF 50, AF 60, AF 80, AF 100

Continuously adjustable

Slats made from specially alloyed aluminium,
double stove-enamelled, shock-resistant and scratchproof

Small stack heights



Exterior Venetian blinds with the following slat widths:

- 50 mm (AF50)
- 60 mm (AF60)
- 80 mm (AF80)
- 100 mm (AF100)

Drive: crank handle drive (K) or motor drive (M)

Design description

Top rail

Made from galvanized, U-shaped profiled cold roll profile, bordered on both edges. Dim. 58x56 mm.

Operation options:

a) Crank handle drive

Raising and lowering the blind and repositioning the slats using a crank handle. Maintenance-free bevel gear unit with gear reduction 2:1 or 3:1, entry into the interior of the room via bearing. Crank rod made from powder-coated or anodized aluminium, with folding handle and crank holder.

b) Motor drive

Raising and lowering the blind and repositioning the slats using an electric motor 230 V/AC. Drive with integrated planetary gear, limit stop at the top and the bottom, thermo-protection switch to prevent overloading the motor.

Slats

Slat width 50/60/80 or 100 mm; made from elastic, specially alloyed aluminium, double stove-enamelled, shock- and scratchproof, lightfast.

Lifting tape

Anti-friction coated lifting tapes for a run with minimum wear and tear and maximum UV-protection. Dim. 6x0.28 mm.

Ladder cord

Made from high-strength terylene-polyester, shrink-resistant, thermically fixed, lightfast.

Bottom rail

Made from extruded aluminium profile.

Dimensions:

AF50: 50x18.6 mm

AF60: 60x18.6 mm

AF80: 80x18.6 mm

AF100: 100x18.6 mm

Surface technically anodized (E6, EV1), or powder-coated acc. to RAL; closed with plastic end caps. Bottom rail not tilting.

Wind protection device (AF60, AF80, AF100)

Via plastic guide nipples fixed to the end of the slats, and extruded side guide rail, anodized or powder-coated acc. to RAL. Optionally via polyamide-sheathed high-grade steel wires ø 2.5 mm, braided flat tape or perlon wire tensioning. Guided through the punchings of all slat ends, tensioned via tensioning bracket made from die-cast aluminium.

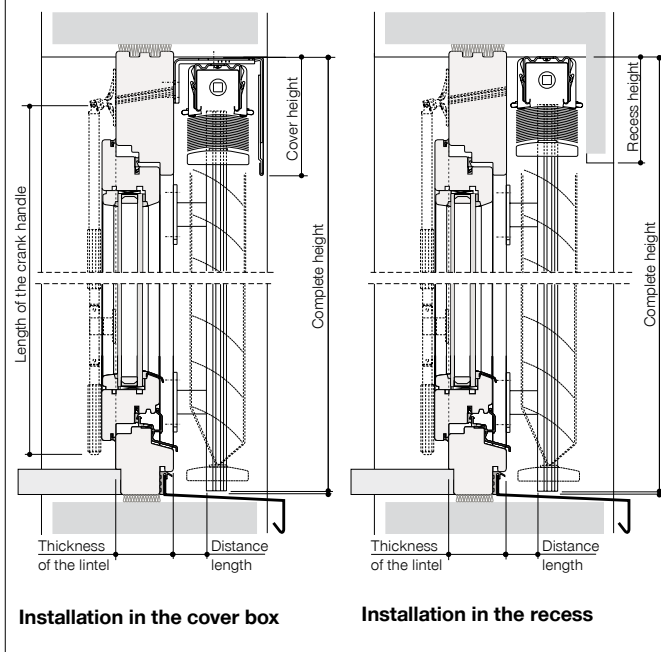
Wind protection device (AF 50)

Via polyamide-sheathed high-grade steel wire ø 2.5 mm, braided flat tape or perlon wire tensioning. Guided through the punchings of all slat ends, tensioned via tensioning bracket made from die-cast aluminium.

Tilting device

Standard: Tilting device without working position with tilting both ways. When lowering the blind, it is closed towards the exterior, smooth tilting process when changing the direction of movement. When raising the blind, it is closed towards the interior.

Installation details (Figures Model AF 80)



Optionally available with Variotec-operation:

Blind lowers, whereas the slats are opened for approx. 50° (working position). Completely closeable in each position. Raising the blind with horizontally positioned (and maximum opened) slats.

The stack heights can differ from the values given due to variances in length or height or circumstances caused by the weather. Therefore the recess heights should be at least 5% above the stack height.

Maximum dimensions	Max. width (mm)	Max. height (mm)	Max. blind surface (m ²)
AF 50 K / M	5000	4000	20
AF 60 K	5000	5400	14
AF 60 M	5000	5400	20
AF 80 K	5000	5400	15
AF 80 M	5000	5400	24
AF 100 K	5000	4000	14
AF 100 M	5000	4000	20

Stack height	Complete height of the blind in mm						
	1000	1500	2000	2500	3000	3500	4000
AF 50 K	107	121	135	149	162	176	190
AF 50 M	122	136	150	164	177	191	205
AF 60 K / M	140	155	175	190	205	230	245
AF 80 K	108	122	137	152	166	181	195
AF 80 M	123	137	152	167	181	196	210
AF 100 K / M	120	130	145	155	165	175	190

Qualified company:

Head Office:
HELLA Sonnen- und Wetterschutztechnik GmbH
 A-9913 Abfaltersbach 125
 T. +43 (0)4846 / 65 55-0
 F. +43 (0)4846 / 65 55-134
 E: office@hella.info

www.hella.info